



APS Battery Charger Manual

Content

[Specifications](#)

[Description](#)

[Package Contents](#)

[Safety Measures](#)

[Battery Charging](#)

[Legal Compliances and Disclaimers](#)

Specifications

APS

SKU	79165
Input voltage, V	5
Output voltage, V	4.2
Mains voltage range, V	100-240
Compatible with batteries	APS2/APS3
Charge temperature range (RH 60±25%)	0 ... 45 °C
Dimensions, mm	71x32x31
Weight, kg	0.05

Description

APS Battery Charger is designed to charge Battery Packs APS2 and APS3 used with digital and thermal riflescopes, thermal monoculars by Pulsar.

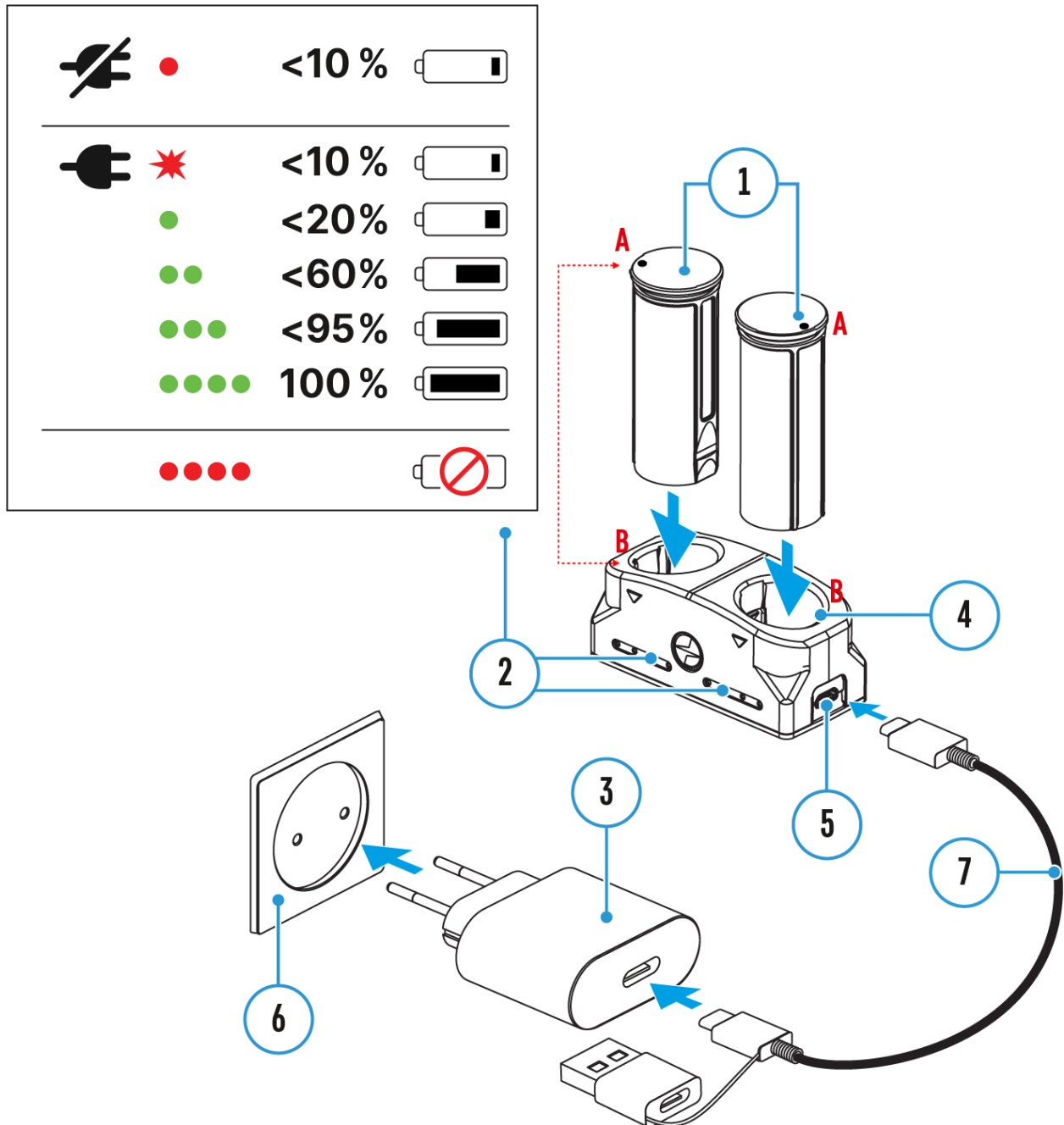
Package Contents

- APS Battery Charger
- Mains charger
- USB Cable
- User manual
- Warranty card

Safety Measures








- Only use this APS Battery Charger or the charger from the package contents of your device to charge APS2/APS3 batteries. The use of any other charger may irreparably damage the Battery Pack or the charger and may cause fire.
- During long-term storage, the Battery Pack should be partially charged – the charge level should be between 50% and 80%.
- Do not charge the battery immediately after bringing the battery from cold environment to a warm one. Wait for 30-40 minutes for the battery to get warm.
- Do not leave a battery unattended while charging.
- Do not leave the Battery Pack with a charger connected to the mains longer than 24 hours after full charge.
- Do not expose the battery pack to high temperature or to a naked flame.
- Do not submerge the battery in water.
- The Battery Pack is short circuit protected. However, any situation that may cause short-circuiting should be avoided.
- Do not dismantle or deform the Battery Pack and Battery Charger.
- Do not drop or hit the Battery Pack and Battery Charger.
- When using the battery at negative temperatures, battery's capacity decreases, this is normal and is not a defect.
- Keep the battery out of the reach of children

Battery Charging



1. Install the rechargeable battery (not included) **(1)** along the guides until stop into the charger's **(4)** slot.
2. Point **A** on the battery and point **B** on the charger should match.
3. You can charge two batteries at the same time – a second slot is designed for this purpose.
4. Connect the plug of the USB cable **(7)** to the port **(5)** of the charger **(4)**.

5. Connect the second plug of the USB cable **(7)** to the USB port on the mains charger **(3)**.
6. Plug the mains charger **(3)** into a socket 100-240V**(6)**.
7. LED indicator **(2)** will show battery charge status (see the table).

(2) LED Indicator*	Battery charge status
	Battery charge from 0 to 10%. Charger connected to the mains power supply
	Battery charge from 0 to 10%. Charger not connected to the mains power supply
 not found or type unknown	Battery charge from 10 to 20%
	Battery charge from 20 to 60%
 not found or type unknown	Battery charge from 60 to 95%
 not found or type unknown	Battery completely charged. Charging will automatically stop. The battery can be disconnected from the charger.
	Battery defective. Do not use the battery!

* Indication shows the current battery charge level for 30 seconds if the APS charger is not connected to the mains. Once connected to the mains, indication shows current battery charge level permanently. LED indicators also glow showing charging process.

Legal Compliances and Disclaimers

The manufacturer reserves the right at any time, without mandatory notice, to make changes to the package contents, design and characteristics that do not impair the quality of the product.

For technical support please contact support@pulsar-vision.com.

Answers to frequently asked questions about the devices can also be found in the [FAQ](#) section.

